



# Getting Started with Osmo Tangram

Updated 05.04.2021  
Version 2.0.0



# Table of Contents

<b>Table of Contents</b>	<b>2</b>
<b>What's Included?</b>	<b>3</b>
<b>Game Setup</b>	<b>4</b>
<b>Menu Navigation</b>	<b>4</b>
Accessing your myOsmo Account	4
Language	4
Resetting All Game Progress	4
Audio Settings	4
Returning to the Main Menu	4
<b>Puzzle Difficulty Settings</b>	<b>5</b>
<b>Navigating the Game</b>	<b>6</b>
<b>Playing the Game</b>	<b>7</b>
<b>Unlocking Prizes</b>	<b>8</b>
<b>Best Practices for Effective Osmo Detection</b>	<b>9</b>
<b>Other Questions</b>	<b>9</b>

# What's Included?

Each Osmo Tangram set contains seven colorful tangram pieces.



**Large Red Triangle**  
Quantity: 1x



**Yellow Square**  
Quantity: 1x



**Large Blue Triangle**  
Quantity: 1x



**Orange Parallelogram**  
Quantity: 1x



**Medium Green Triangle**  
Quantity: 1x



**Small Blue Triangle**  
Quantity: 1x



**Small Fuchsia Triangle**  
Quantity: 1x


# Game Setup

To get started, grab your Osmo Base and Reflector, **compatible device** ([check here](#)), and Osmo Tangram Pieces. The Osmo Tangram app is available free of charge on the App Store (for compatible iPads) and on Amazon (for compatible Fire tablets). **Download from:** [playosmo.com/gettangram](http://playosmo.com/gettangram)

1. Set your tablet into the Osmo Base and push the Red Reflector down over the camera.
2. Follow the onboarding prompts and have the Osmo Tangram app installed and ready to play.
3. Remove your Tangram Pieces from the stackable container. Set them aside within easy reach.
4. Open the Osmo Tangram App and tap on the Play on the Main Menu.

## Menu Navigation

### Accessing your myOsmo Account

Tap  (or your avatar, if you're already logged in) in the upper right corner to view the myOsmo account screen. See this [guide to myOsmo accounts and profiles](#) for more information.


### Language

The default language automatically selects based on the default language setting of your device. Osmo Words currently only supports American English gameplay, but will have on-screen text in English (US), English (UK), French (FR), French (CA), German, Spanish, Italian, Danish, Dutch, Norwegian, Swedish, Chinese (Simplified), Chinese (Traditional), and Japanese.


### Resetting All Game Progress

- Tap  and tap Reset Progress. **Be careful!** All progress across all levels will be lost and reset.

### Audio Settings


- Tap  and use the toggles to turn on or off Music or Sound.

### Returning to the Main Menu

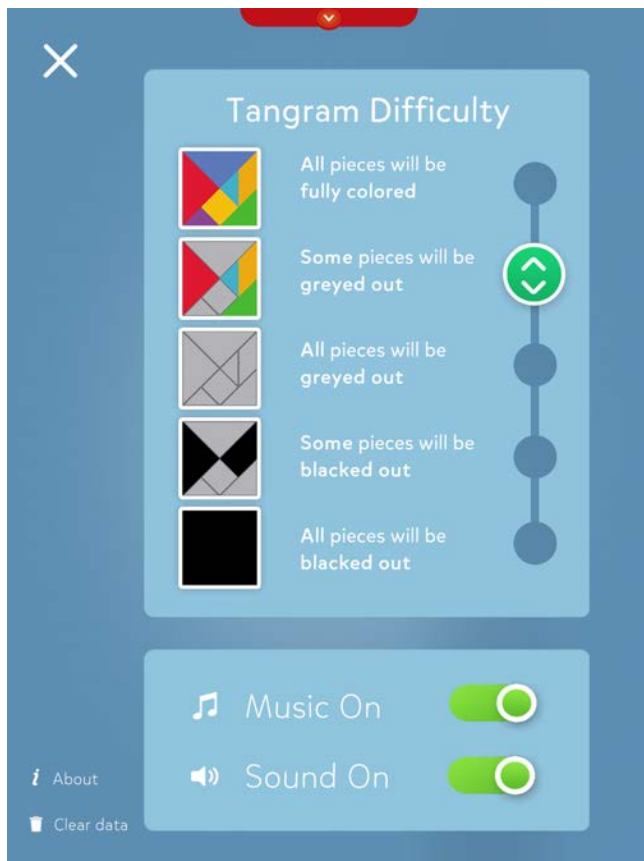
- Tap  to return to the **Main Menu**.

## Puzzle Difficulty Settings

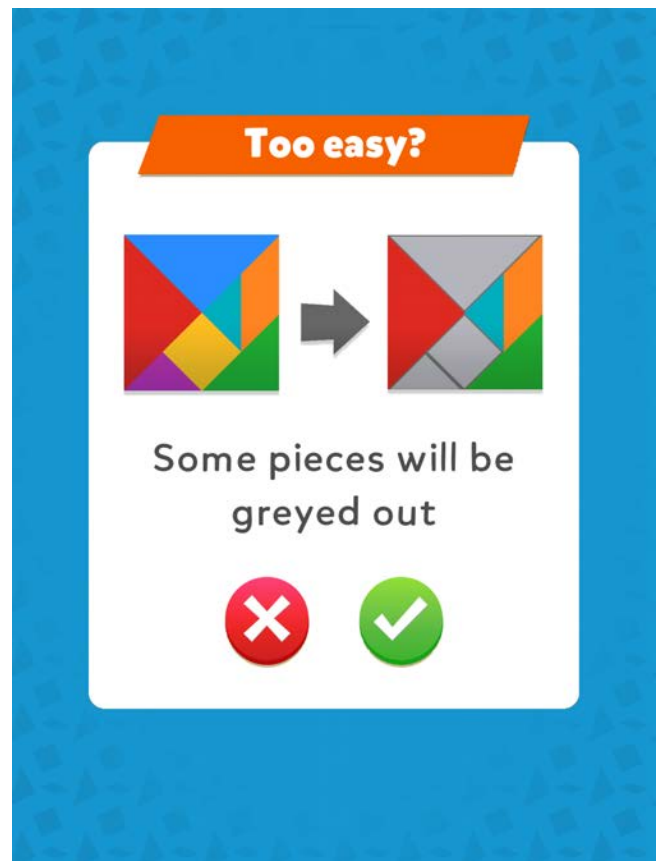
Difficulty in Osmo Tangram is determined by how visible the differences between the pieces are. This setting is customizable in **two ways**. You can manually change it by going into settings on the Main Menu. Also, there are prompts in game that will suggest the right time to either increase for a challenge or decrease difficulty if it's a little too tricky.

1. Tap  on the start menu
2. Select your desired level of difficulty. Difficulty increases as you go down the list.
3. Tap the **White X** to save your settings.

**Note:** Suggestion Difficulty prompts is the recommended way to play as it eases you into the right level of difficulty but you are free to change the setting at any time.






Manually set difficulty

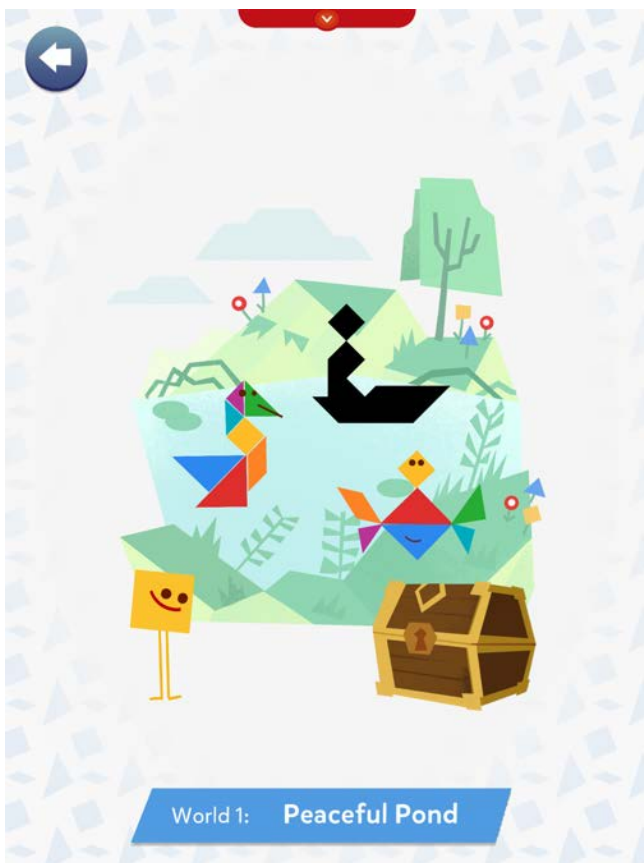


Suggestion prompt based on play

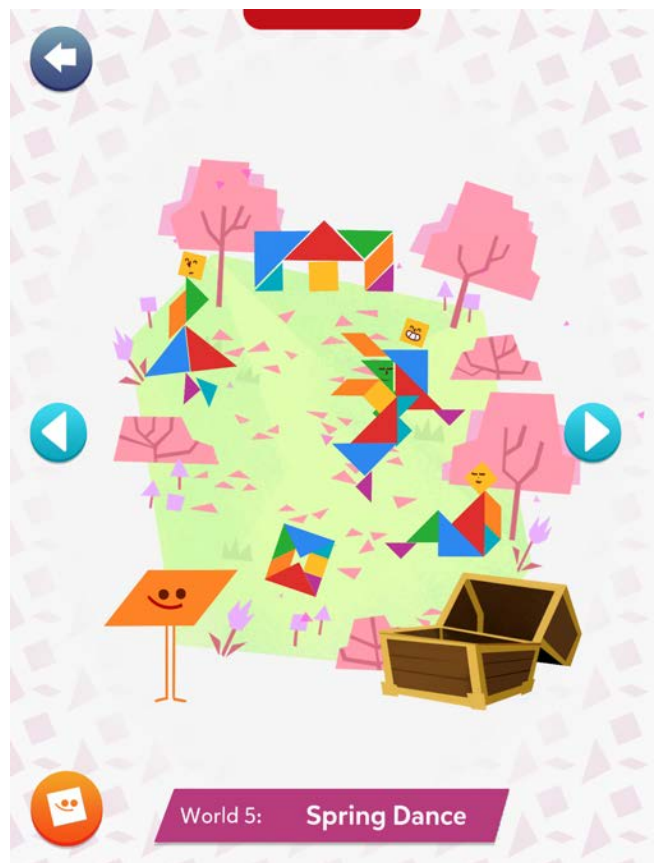
# Navigating the Game

Tangram helps players exercise spatial and visual problem-solving skills. The game includes over 45 puzzles, split into different themed worlds.

1. Start the game by pressing  on the main menu.
2. After the initial introduction level, you will be taken to World 1
3. Tap on any of the **black silhouettes** to play a new puzzle.
4. You can also replay if you tap on a solved puzzle.
5. Solving all puzzles in a World will unlock the next world and a treasure for your Tangram Buddy!
6. Switch between worlds using  and .



World 1 map





Many worlds to explore!

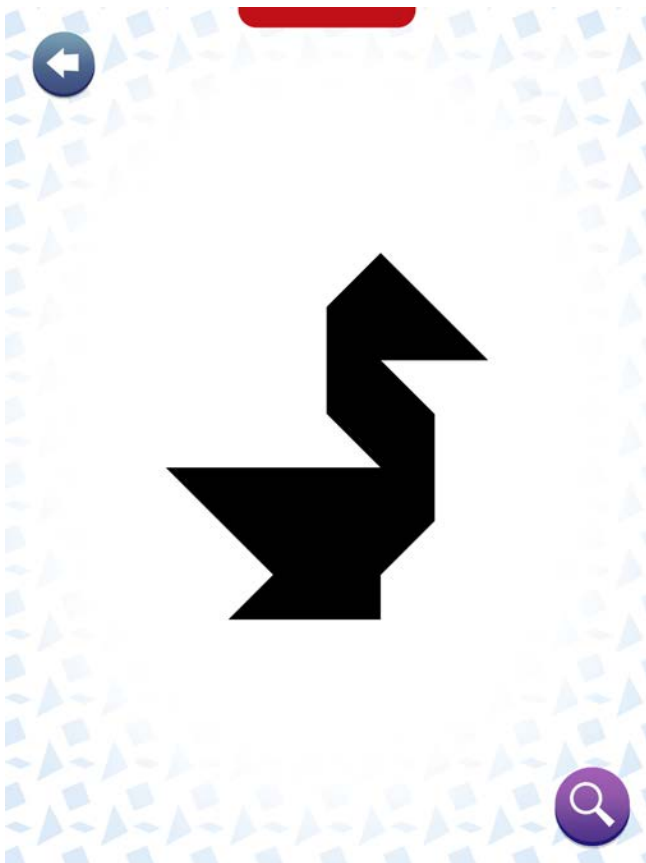
## Playing the Game

To solve a puzzle, recreate the image you see on screen with your physical Tangram Pieces. Move your pieces centered and in front of your Osmo. This will make sure they are seen correctly.

**When at least two pieces** are correctly placed next to each other, you will see it light up and change to a solid color on the screen. After all the pieces have been placed correctly, watch as your creation comes to life!

To leave a puzzle and return to the world map, tap on .

**Note:** Is a puzzle too tricky? Tap on  to get a free hint. Using many hints isn't a problem, but it will trigger the difficulty prompt to suggest you switch to an easier difficulty level.



Puzzle to solve





Uh oh! It's alive!

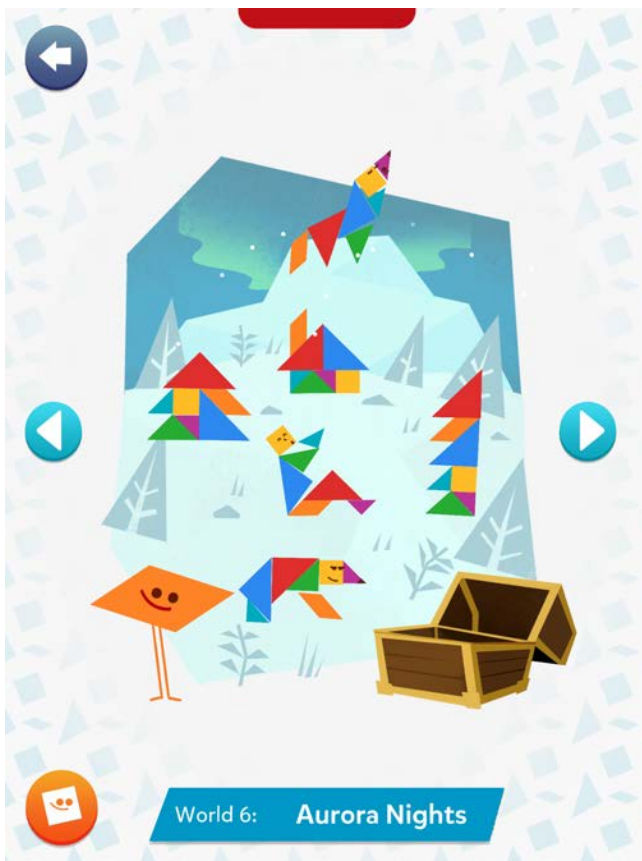


## Unlocking Prizes

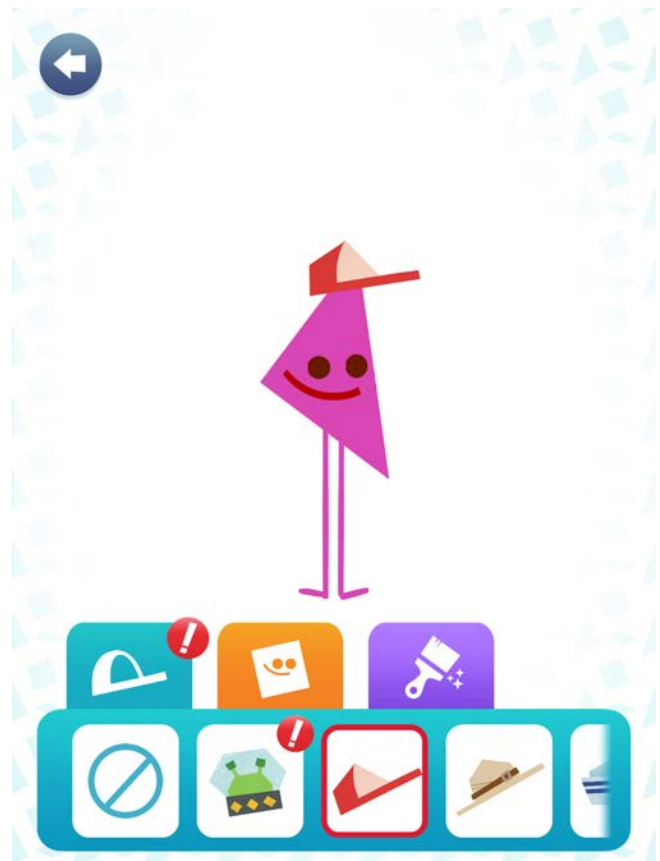
Your Tangram Buddy follows you wherever you go in the game and interacts with every puzzle you solve in a playful scene. Sometimes it's silly, other times it can be a bit mischievous!

Every world you solve will unlock a different set of unlockables for your new friend.

1. On the world Map, tap on .
2. Select which tab you'd like to customize: Outfit, shape, or pattern.
3. When you're ready, save your customization and return to the world map, by tapping on .



Customization button is at button left.



Choose your outfit, shape, and pattern.



# Best Practices for Effective Osmo Detection



1. Keep hands and fingers away from the pieces after placing them so that Osmo can see it.
2. Keep the reflector centered along the top edge of your device so the camera can see the play space.
3. Keep the pieces close to your device so the camera can see them.
4. Play Osmo Tangram in a well lit room. If your table top or surface is a dark color, it may be interfering with the software detection.
5. Try placing an 8.5 x 11 sheet of white paper on the tabletop, and then put the pieces on top of the paper.
6. Make sure you are using a device that is compatible with Osmo. Please check [this list of Osmo-compatible devices](#).
7. If you experience any issues despite this setup, please reach out to [support@playosmo.com](mailto:support@playosmo.com) for assistance.

## Other Questions

### **What do I do if I lose a Tangram Piece?**

Please reach out to [support@playosmo.com](mailto:support@playosmo.com) for assistance.

### **Can I clean the pieces?**

You can gently wipe the pieces with a damp cloth if they get dirty.

### **Looking for the Osmo Tangram Education guide?**

You can access the legacy [Getting Started Guide here](#).